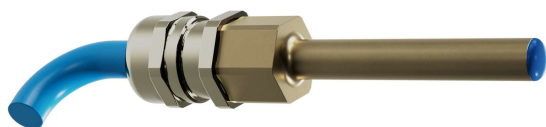


Product information

ATEX A-U1-2

Switching unit ATEX A-U1-2




For device NW1

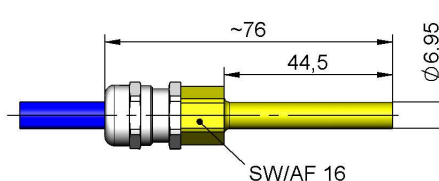
Characteristics

Intrinsically safe switching unit with reed switch and ATEX approval BVS 03 ATEX E390 X for the NW1 device series for use in intrinsically safe circuits.

Technical data

Switch	reed contact
Media temperature	-20...+110 °C
Ambient temperature	-20...+50 °C
Electr. connection	cable blue, 3-wire, numbered length 2.5 m or 5 m
Wiring diagram	N.O. or N.C no. 0.442  Switching function dependent on the installation position of the basic device NW1
Switching voltage	max. 30 V
Switching current	max. 1 A
Internal capacity	negligible
Internal inductivity	negligible
Housing material	brass gland: brass nickelled
Protection class	IP 65 according to industrial standard
Weight	0.05 kg
Labeling	I M1 Ex ia I Ma II 1G Ex ia IIC T4 Ga II 1D Ex ia IIIC T ₂₀₀ 135°C Da

Dimensions



Instructions for handling and operation

- For use only in intrinsically safe circuits – provide suitable isolating amplifiers
- Cable lengths max. 5 m
- It must be ensured that the specified values for voltage and current are not exceeded.
- A load must be connected in series when connecting the switch.
- The electrical specifications apply to resistive loads. Capacitive, inductive, and lamp loads must be operated with protective circuitry.

Order information

The basic device (e.g. NW1-020HMA) is ordered plus switching unit ATEX A-U1-2.

Art. no.	Order designation	Version
489138	ATEX A-U1-2	with cable, length 2.5 m
489139	ATEX A-U1-2	with cable, length 5 m